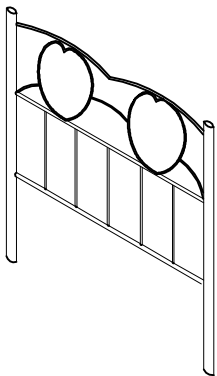
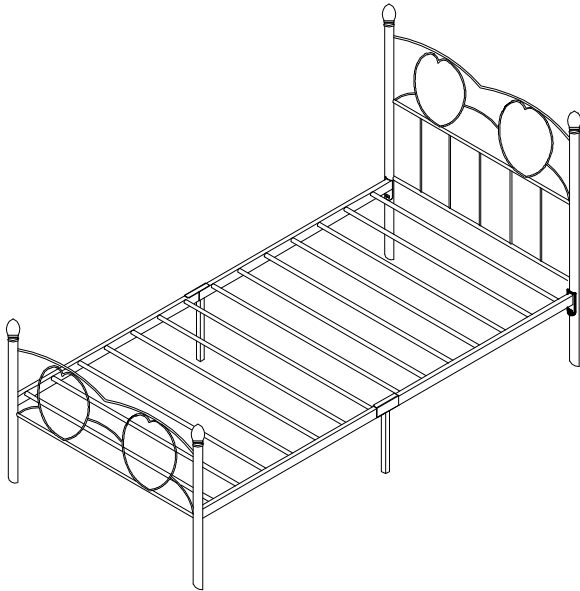
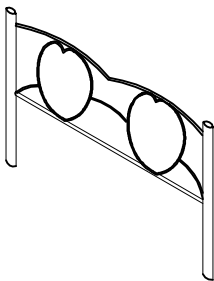


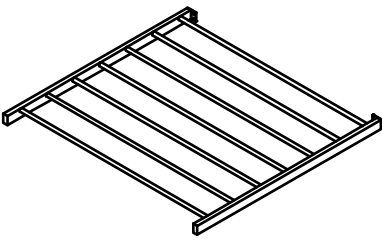
# ASSEMBLY INSTRUCTIONS



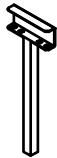
**A\*1PCS**



**B\*1PCS**



**C\*2PCS**



**D\*2PCS**

**E\*4PCS**

**F\*4PCS**

**G\*12PCS**

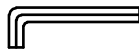
**H\*1PCS**



$\frac{1}{4}$ "\*60MM



$\frac{1}{4}$ "\*19MM



4M

Note: Pls do not tighten all bolts until the bed is assembled completely

